

Douala/Kribi-Campo and Rio del Rey Basins

Integrated well and seismic data packages, including fully reimaged 3D PSDM data, a comprehensive well library, and value-added interpretative products.

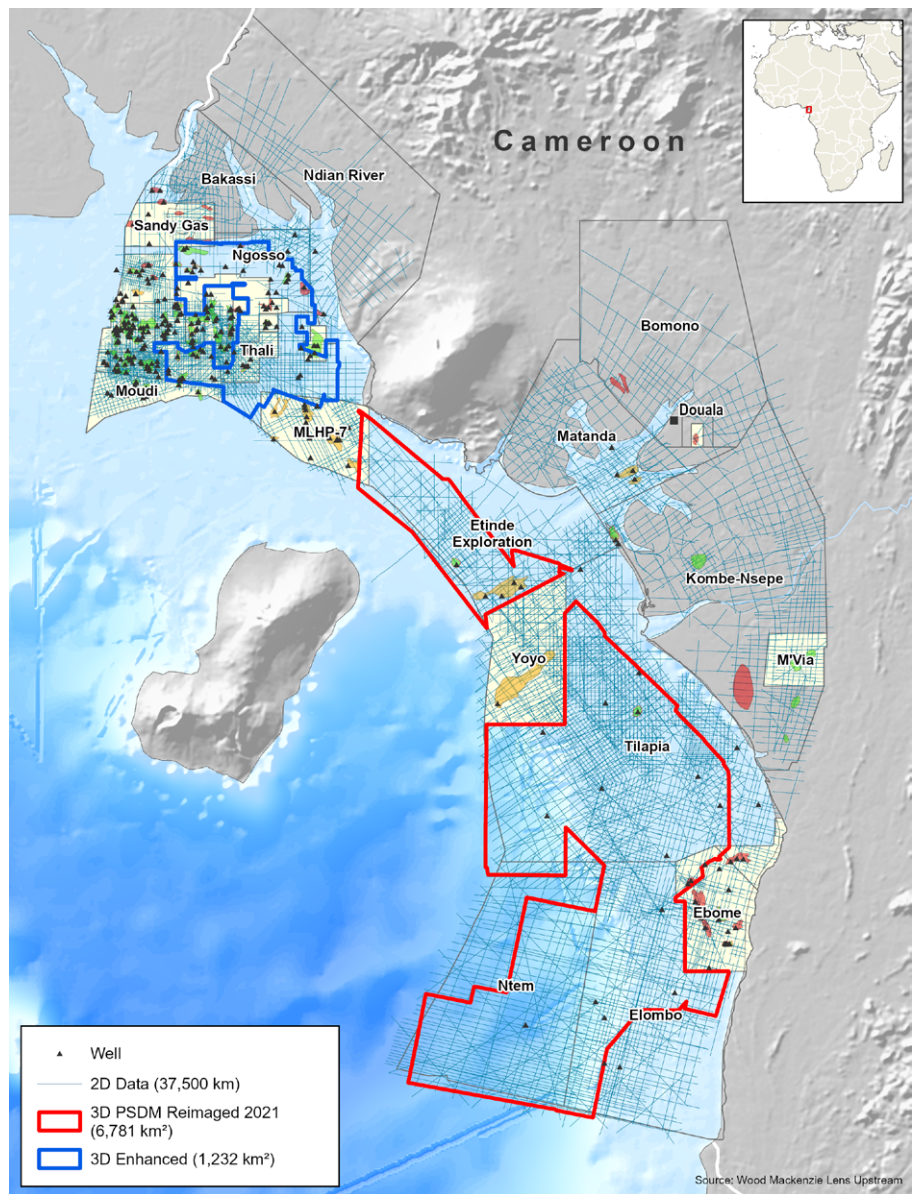
Viridien, in partnership with Société Nationale des Hydrocarbures (SNH), provides ready-to-use exploration data for Cameroon's Douala/Kribi-Campo (DKC) and Rio Del Rey (RDR) basins to support near-term, high-exploration opportunities.

New and enhanced seismic data:

- 6,800 km² of new PSDM data reimaged in 2021 from field tapes using the latest technology, including joint 3D source-receiver deghosting, SRME and more in the DKC basin
- 9,000 km² of enhanced noise-attenuated 3D data complemented by an extensive zero-phased and time-matched 2D seismic data set in the DKC and RDR basins
- Geochemical database including legacy wells, seeps and out-crop analysis
- Sedimentological interpretation of key stratal slices
- Prospectivity reviews for each basin

Well data package:

- More than 150 wells available
- Well and seismic montages, reconnaissance petrophysics, well failure analysis, and other value-added products
- Regional seismic interpretation and petroleum synthesis reports



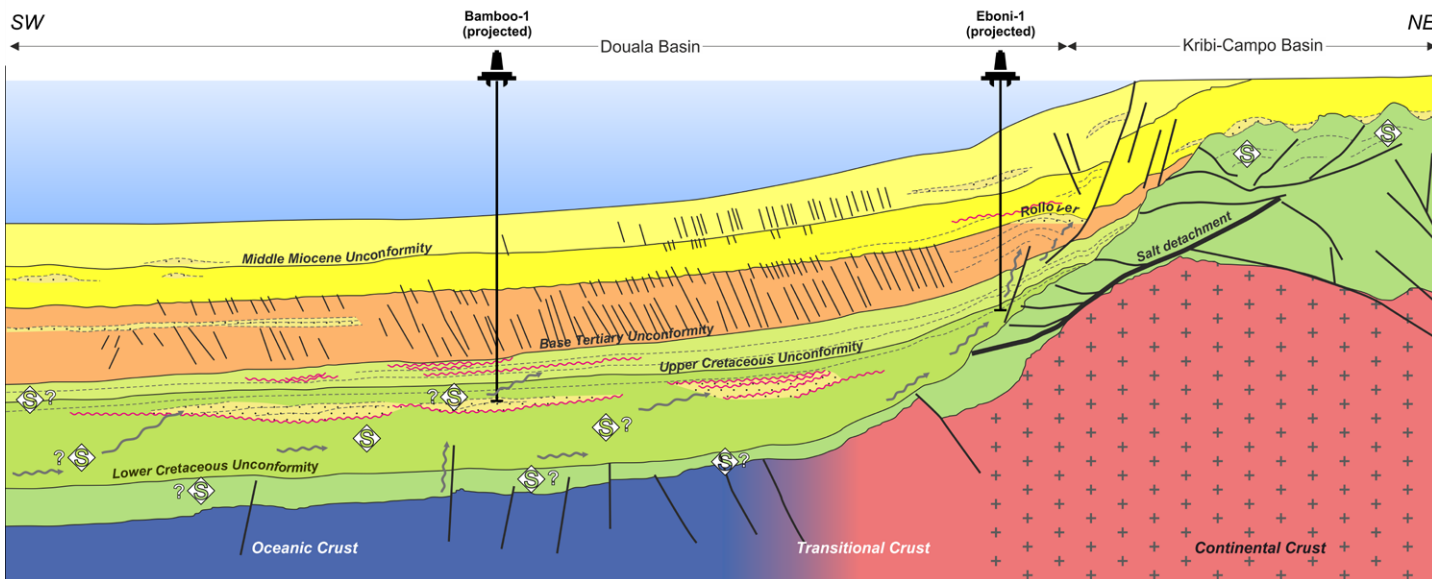
CAMEROON

Insights into prospectivity

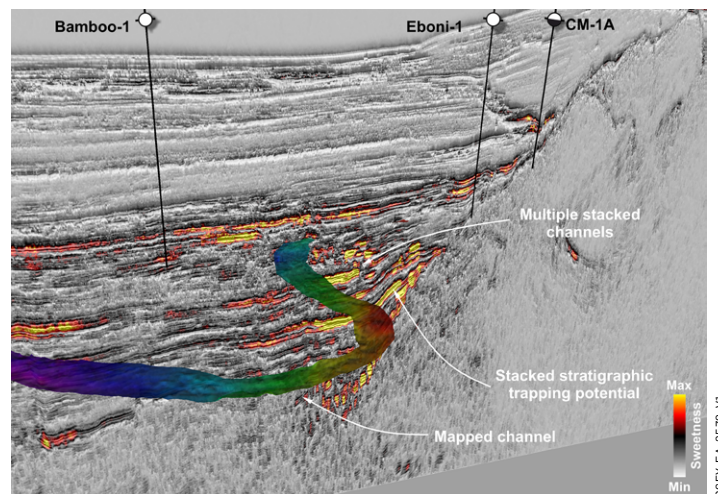
Cameroon is a proven hydrocarbon province with production from both the DKC and RDR basins. With existing oil and gas infrastructure, both basins present significant opportunities to access near-term high-impact exploration assets with commercial hydrocarbon accumulations in strategic positions. There are large tracts of open acreage available, particularly in the DKC basins.

The DKC basins are located to the south of the Cameroon volcanic line at the northern end of the prolific hydrocarbon-producing South Atlantic Rift. The presence of an active

hydrocarbon system has been demonstrated by numerous gas and oil discoveries both onshore and offshore. Structural and stratigraphic traps are proven from Lower Cretaceous through to Upper Tertiary, varying from tilted fault blocks to turbidite channels and fans in deeper water. Recent new petrophysical and geophysical analysis has identified potential missed opportunities from previous exploration, as well as new plays with the potential for large volumes of hydrocarbons to be present across this increasingly prospective basin.



Conceptual play cartoon for the DKC basins.



Seismic section overlaid with the seismic attribute sweetness, demonstrating deeper potential within stacked channel systems (projected well locations).

Local contact

Simon Cheesley – Earth Data
 Tel: +44 7584 211 920
 datalibrary.eame@viridiengroup.com